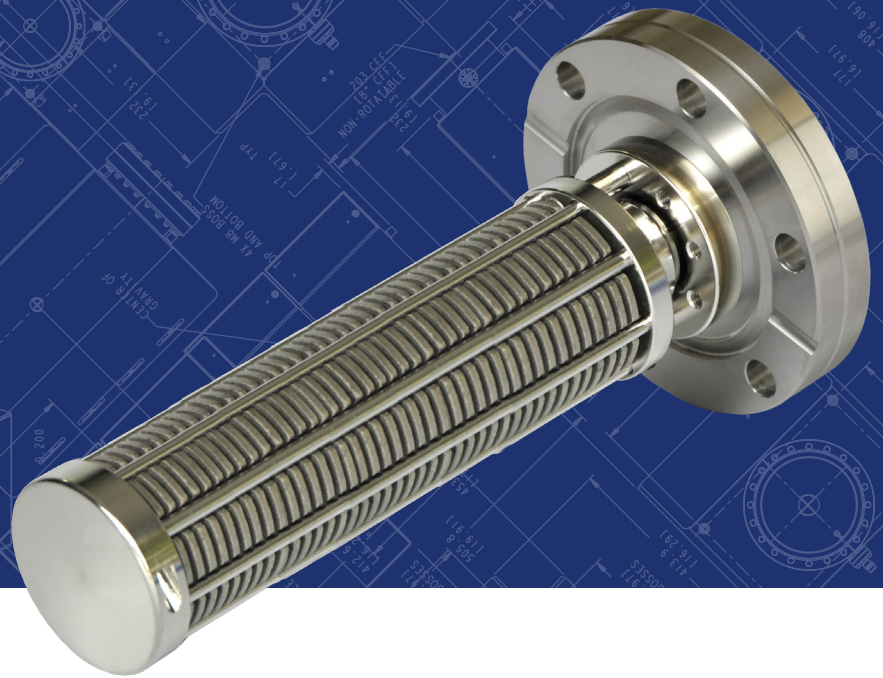
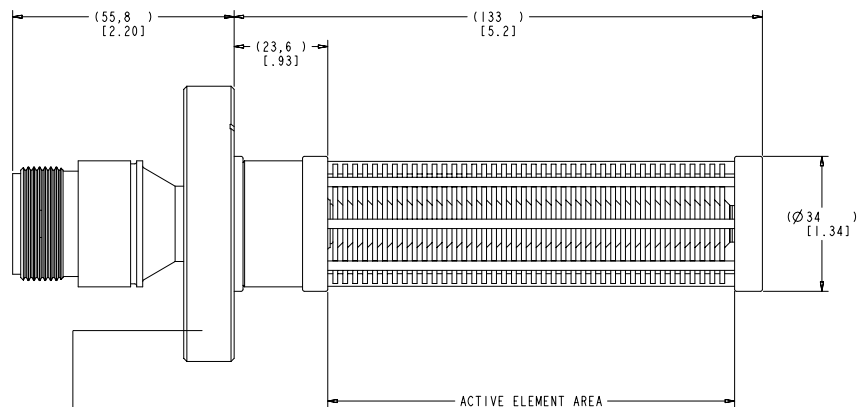
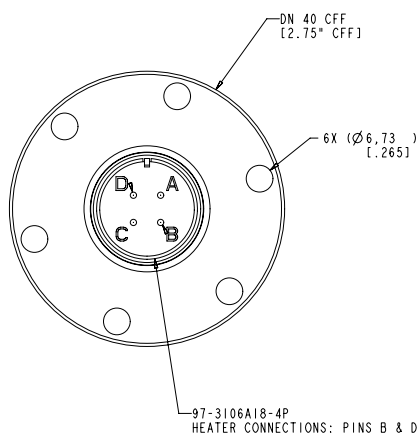


# 410NP / 410NS Non-Evaporable Getter Pump



## DIMENSIONAL DETAILS



Depending on the NEG type  
either 410NP (pressed) or  
410NS (sintered) is engraved

# Technical specifications

	410NP			410NS		
	H2	CO	N2	H2	CO	N2
Pumping speed, l/s*	418	156	54	470	110	90
Sorption capacity, torr · l	3600	0.8	0.27	2200	0.26	0.13
Getter mass, g	180			110		
Total mass, kg (lbs)	0.85 (1.87)			0.78 (1.72)		
Flange	DN 40 (2.75 in.) CFF					

\*Pumping speeds reference initial speed values at 25° C in exposed configuration

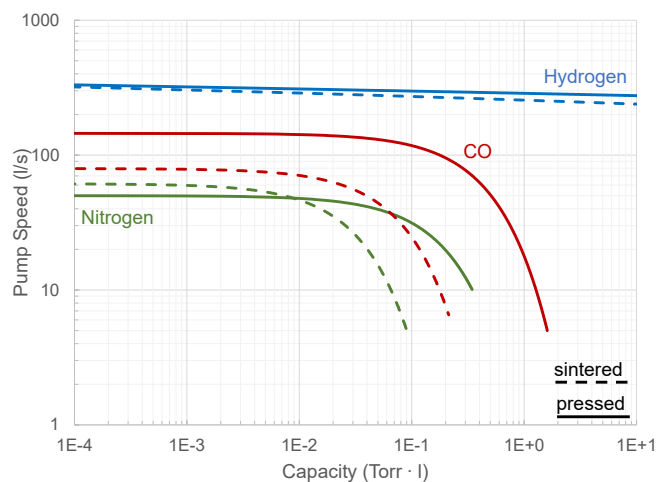
## ORDERING INFORMATION

Part number	Description	Compatible products
410NP	NEG Pump, 400l/s, Pressed Discs, 4 Pins	DIGITEL SPC-NEG
410NS	NEG Pump, 400l/s, Sintered Discs, 4 Pins	
FI4S1MSL	Cable SPC-NEG, 1m, Large Connector, Silicone	410NP, DIGITEL SPC-NEG
FI4S3MSL	Cable SPC-NEG, 3m, Large Connector, Silicone	
FI4S6MSL	Cable SPC-NEG, 6m, Large Connector, Silicone	

## PERFORMANCE CHARACTERISTICS

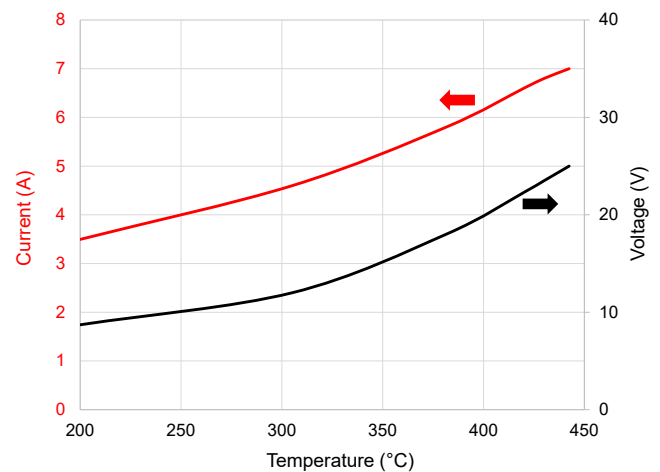
### Pumping Speed vs. Sorption Capacity

Measured in accordance with ASTM F798-97



### Temperature vs. Current and Voltage

Applies to 410NP / 410NS



www.gammavacuum.com | info@gammavacuum.com | Part of the Atlas Copco Group

3601 7252 01 © November 2021, Gamma Vacuum | All rights reserved. Designs and specifications are subject to change without notice or obligation.

Read all safety instructions in the manual before usage.