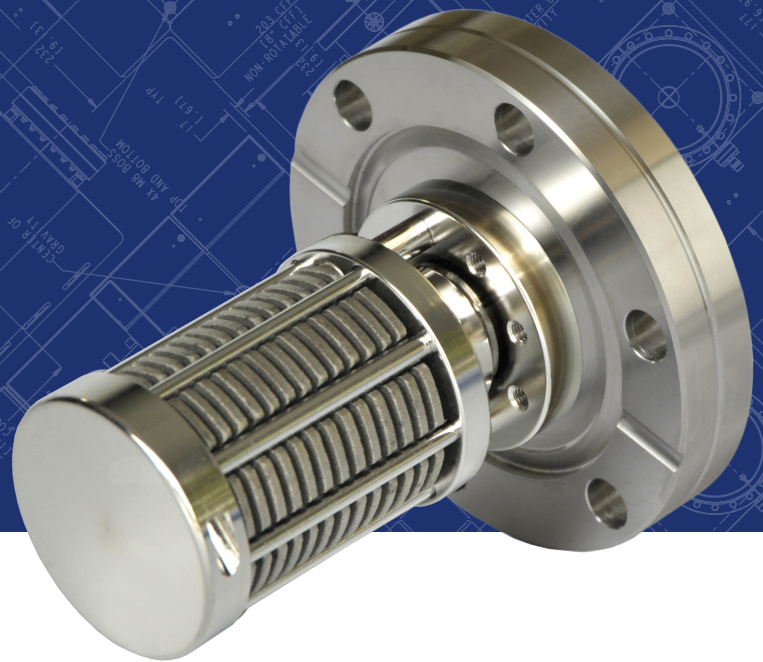
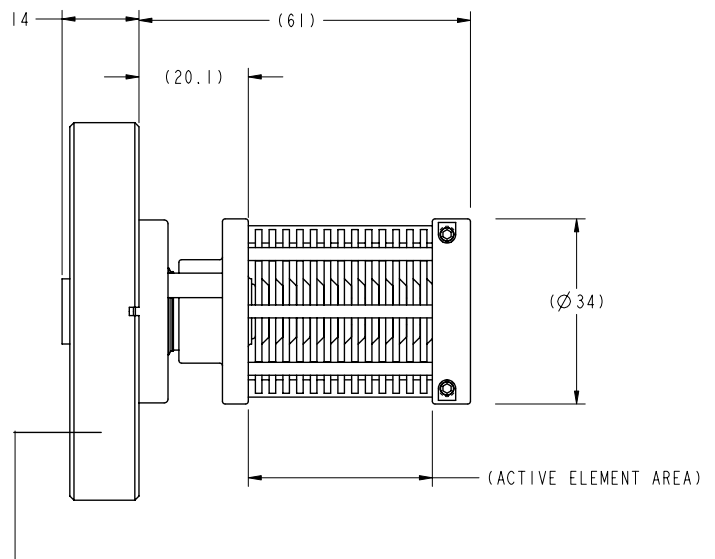
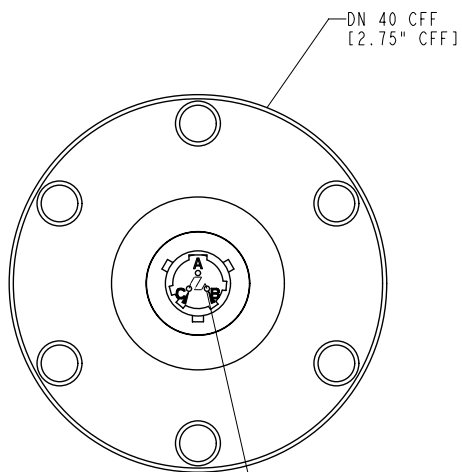


100NP / 100NS Non-Evaporable Getter Pump



DIMENSIONAL DETAILS



Depending on the NEG type either 100NP (pressed) or 100NS (sintered) is engraved

MS3476A8-33P:
HEATEP CONNECTIONS PINS B AND C

Technical specifications

	100NP			100NS		
	H2	CO	N2	H2	CO	N2
Pumping speed, l/s*	106	51	17	120	36	30
Sorption capacity, torr · l	1170	0.2	0.07	730	0.09	0.04
Getter mass, g	58.5			36		
Total mass, kg (lbs)	0.54 (1.19)			0.52 (1.14)		
Flange	DN 40 (2.75 in.) CFF					

*Pumping speeds reference initial speed values at 25° C in exposed configuration

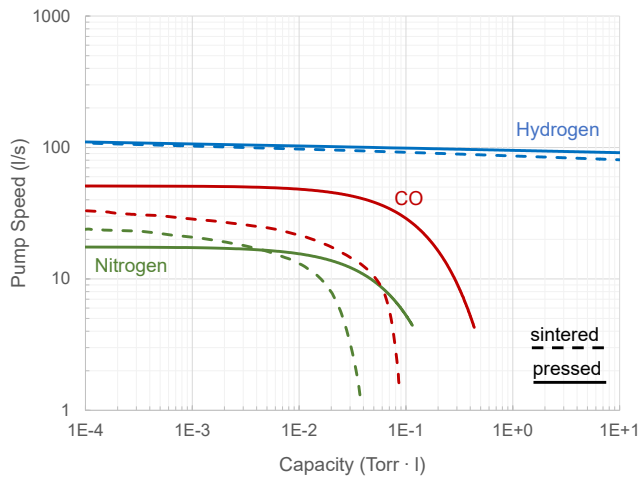
ORDERING INFORMATION

Part number	Description	Compatible products
100NP	NEG Pump, 100 l/s, Pressed Discs	25S, 45S, 75S with side flange
100NS	NEG Pump, 100 l/s, Sintered Discs	
FI4S1MSS	Cable SPC-NEG, 1m, Small Connector, Silicone	50NP - 400NP, DIGITEL SPC-NEG
FI4S3MSS	Cable SPC-NEG, 3m, Small Connector, Silicon	
FI4S6MSS	Cable SPC-NEG, 6m, Small Connector, Silicone	

PERFORMANCE CHARACTERISTICS

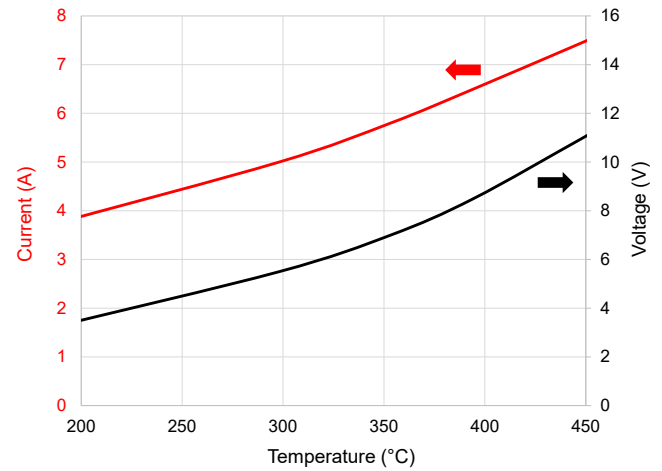
Pumping Speed vs. Sorption Capacity

Measured in accordance with ASTM F798-97



Temperature vs. Current and Voltage

Applies to 100NP / 100NS



www.gammavacuum.com | info@gammavacuum.com | Part of the Atlas Copco Group

3601 7202 01 © November 2021, Gamma Vacuum | All rights reserved. Designs and specifications are subject to change without notice or obligation.

Read all safety instructions in the manual before usage.