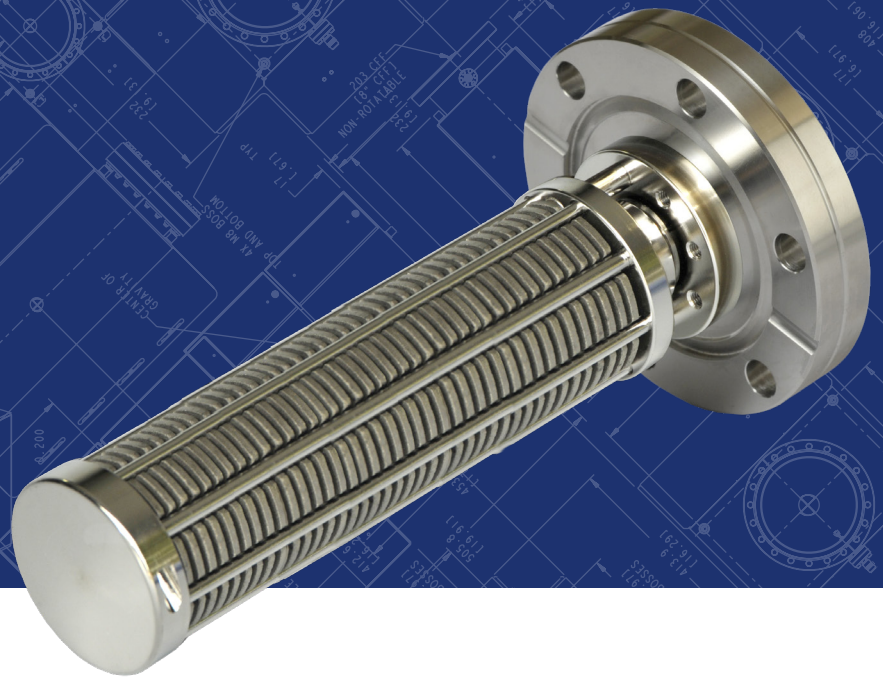
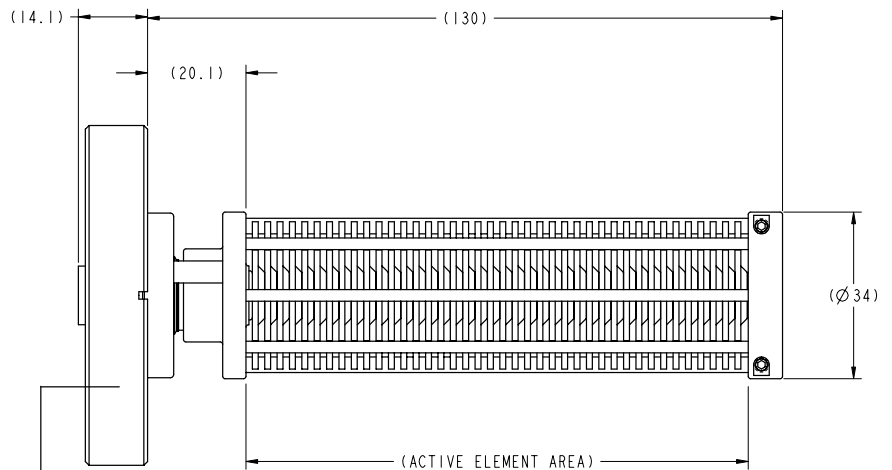
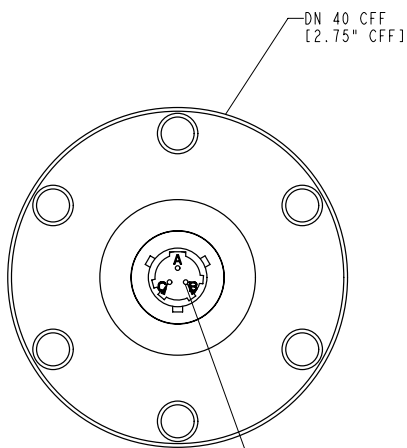


400NP / 400NS Non-Evaporable Getter Pump



DIMENSIONAL DETAILS



Depending on the NEG type either 400NP (pressed) or 400NS (sintered) is engraved

MS3476A8-33P:
HEATER CONNECTIONS: PINS B AND C

Technical specifications

	400NP			400NS		
	H2	CO	N2	H2	CO	N2
Pumping speed, l/s*	418	156	54	470	110	90
Sorption capacity, torr · l	3600	0.8	0.27	2200	0.26	0.13
Getter mass, g	180			110		
Total mass, kg (lbs)	0.85 (1.87)			0.78 (1.72)		
Flange	DN 40 (2.75 in.) CFF					

*Pumping speeds reference initial speed values at 25° C in exposed configuration

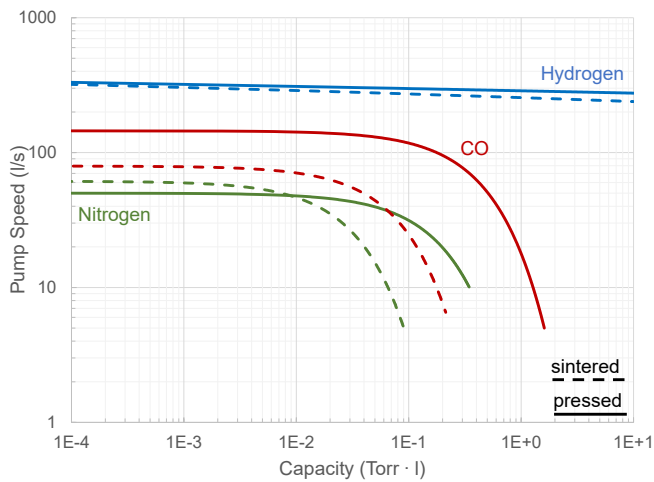
ORDERING INFORMATION

Part number	Description	Compatible products
400NP	NEG Pump, 400 l/s, Pressed Discs	100L or larger; DIGITEL SPC-NEG
400NS	NEG Pump, 400l/s, Sintered Discs	
FI4S1MSS	Cable SPC-NEG, 1m, Small Connector, Silicone	50NP - 400NP, DIGITEL SPC-NEG
FI4S3MSS	Cable SPC-NEG, 3m, Small Connector, Silicone	
FI4S6MSS	Cable SPC-NEG, 6m, Small Connector, Silicone	

PERFORMANCE CHARACTERISTICS

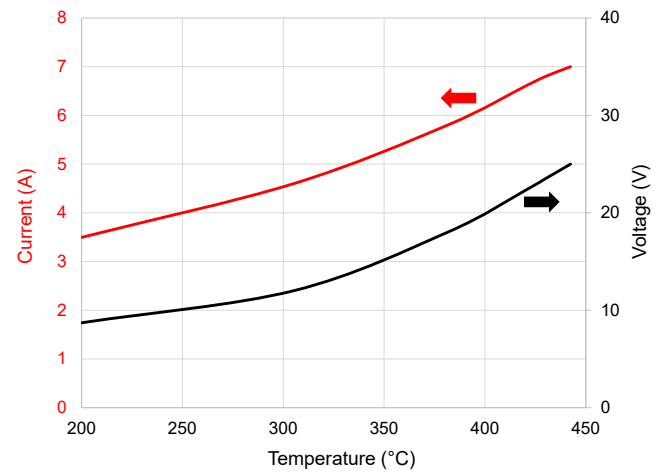
Pumping Speed vs. Sorption Capacity

Measured in accordance with ASTM F798-97



Temperature vs. Current and Voltage

Applies to 400NP / 400NS



www.gammavacuum.com | info@gammavacuum.com | Part of the Atlas Copco Group

3601 7232 01 © November 2021, Gamma Vacuum | All rights reserved. Designs and specifications are subject to change without notice or obligation.

Read all safety instructions in the manual before usage.