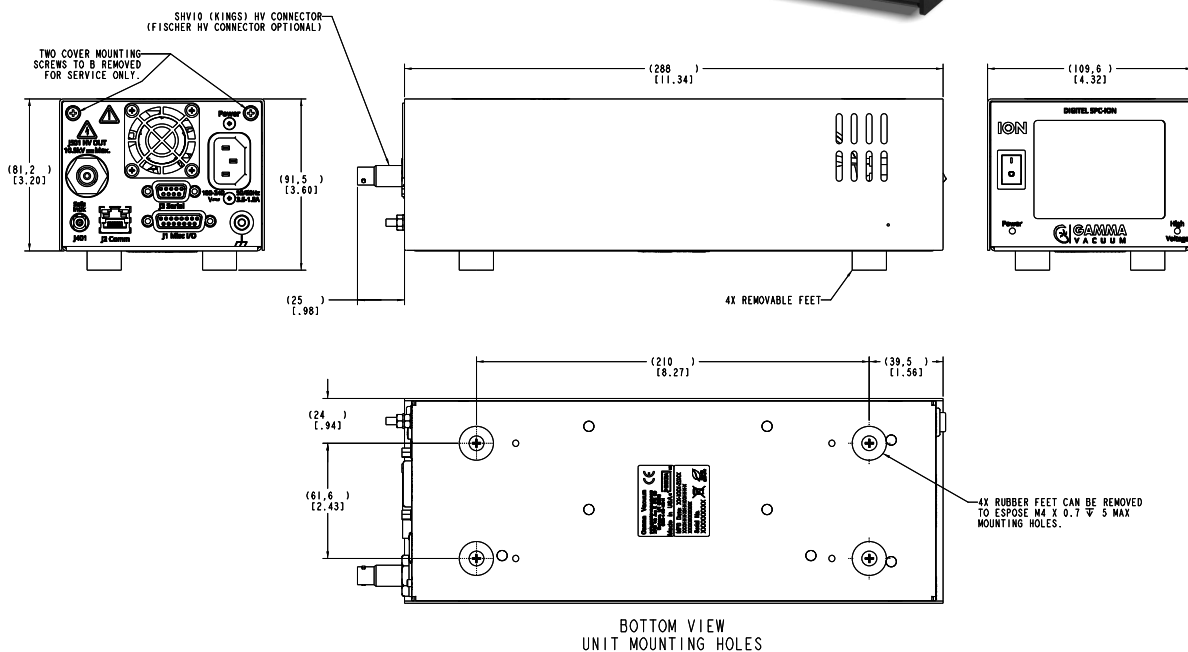


DIGITEL SPC-ION Small Pump Controller



DIMENSIONAL DETAILS*



*Alternative configurations available at www.gammavacuum.com

Technical specifications

Input power	
Voltage	100 - 240 VAC or 24 VDC
Frequency	50/60 Hz
Output power	
Independent outputs	1
Operation Voltage	+/- 3 - 7 kV (100V steps)
Current (maximum)	40 mA
Watts (maximum)	50
Resolution	1 nA
High voltage connections	
One channel 10kV SHV or Fischer	
Display	
Type	3.5" LCD color touchscreen (320x240 pixel)
Readout	Pressure, current, voltage, controller temperature and programmable options
Analog outputs	
Voltage	Fixed, 1V per 1000V
Current/pressure	User programmable, see manual
Setpoint	
Single setpoint drives relay and TTL	
Communication	
Ethernet, Serial: 232, 485 (FD/HD)	
Conformity to norms	
EN 61326-1, EN 61010-1, FCC Part 15	
Weight, kg(lbs)	
Universal 100–240 VAC: 2.2 (4.9), 24 V: 1.8 (4.0)	
Size	
2U high, 1/4 rack wide, 313 mm (12.3 in.) deep	
Additional features	
SAFECONN, Auto HV Restart, High-Pot, Automatically high-voltage adjustment, Jumpstart	

Ordering Information

High Voltage	Input Connections	Output Connections	Polarity	Part Number
1x HV Section	Universal (100 - 240 VAC)	Single 10 kV SHV + SMB SAFECONN	positive	SPCIPSUV
			negative	SPCINSUV
		Single Fischer + Banana SAFECONN	positive	SPCIPFUV
			negative	SPCINFUV
	24 VDC	Single 10 kV SHV + SMB SAFECONN	positive	SPCIPS24
			negative	SPCINS24
		Single Fischer + Banana SAFECONN	positive	SPCIPF24
			negative	SPCINF24

Accessories

Product description	Part Number
Power Supply, 24VDC, 3.75A, 90W, 1m, SPCe	G392291
2 m electrical supply cable, US 110 V	G380068
2m electrical supply cable, US 220 V, IEC320	G380072
2m electrical supply cable, EC 230 V	G380069

Product description	Part Number
2m electrical supply cable, UK240, BS1363	G380071
2m electrical supply cable, AU230	G380098
2m cable, bare 24V wire	G381016

Part of Atlas Copco Group

www.gammavacuum.com | info@gammavacuum.com
 3601 7113 01 © January 2026, Gamma Vacuum | All rights reserved.
 Designs and specifications are subject to change without notice or obligation. Read all safety instructions in the manual before usage.

